

MEDROMA

www.medroma.co.za

ORTHOTICS

PROSTHETICS

COMPRESSION GARMENTS

VOE
—

COMPRESSION GARMENTS



Since 1985, VOE, S.A. has specialized in the manufacture of compression garments for postoperative plastic and cosmetic surgery. Plastic surgeons worldwide rely on our products and prescribe them to their patients.

In order to achieve controlled pressure on the treatment area, VOE garments are made from long-lasting, high-quality multidirectional elastic fabrics. They are breathable and hypoallergenic.

VOE garments improve postoperative healing, help to sculpt the treatment area and reduce swelling. The garments' design and manufacture ensure full comfort and top-quality finishes.

The garments listed herein are grouped according to the type of surgery.

Liposuction garments

Standard girdles

Recommended for postoperative periods following abdominal, trochanteric, thigh and knee liposuction, as well as in thigh lifts. The garment is opened by a triple row of hook-and-eye closures at the front part. This enables the size of the garment to be reduced after the inflammation in the area treated has subsided. All the models have an open crotch, except for the 3007, 3007-2, 3007W and 3007W-2 models, which are fastened with hook-and-eye closures.

Available in alabaster and black.

Abdominal supporter with straps



● Art. 3007 ● Art. 3007-2

Sizes: 70 (XXXXS) to 115 (XXXL)

Girdle with abdominal extension above the knee



● Art. 3004 ● Art. 3004-2

Sizes: 70 (XXXXS) to 115 (XXXL)

Girdle with abdominal extension below the knee



● Art. 3009 ● Art. 3009-2

Sizes: 70 (XXXXS) to 115 (XXXL)

Ankle-length girdle with abdominal extension



● Art. 3012 ● Art. 3012-2

Sizes: 70 (XXXXS) to 115 (XXXL)

Liposuction garments

Standard girdles

Abdominal supporter to the waist



● Art. 3007W ● Art. 3007W-2

Sizes: 70 (XXXXS) to 115 (XXXL)

Above the knee girdle



● Art. 3002 ● Art. 3002-2

Sizes: 70 (XXXXS) to 115 (XXXL)

Below the knee girdle



● Art. 3006 ● Art. 3006-2

Sizes: 70 (XXXXS) to 115 (XXXL)

Ankle-length girdle



● Art. 3011 ● Art. 3011-2

Sizes: 70 (XXXXS) to 115 (XXXL)

Full-length girdle
Includes sliding sock for easy placement.



● Art. 3008 ● Art. 3008-2

Sizes: 70 (XXXXS) to 115 (XXXL)

Liposuction garments

Standard girdles with zippers

Standard liposuction girdles are available with openings on the sides of the garment as an optional feature. The garment is closed by means of two zippers. All the models have an open crotch, except for models 3007Z and 3007Z-2, which are fastened with hook-and-eye closures.

Removable shoulder straps.

Available in alabaster and black.

Above the knee girdle with zippers



● Art. 3002Z ● Art. 3002Z-2

Sizes: 70 (XXXXS) to 115 (XXXL)

Below the knee girdle with zippers



● Art. 3006Z ● Art. 3006Z-2

Sizes: 70 (XXXXS) to 115 (XXXL)

Ankle-length girdle with zippers



● Art. 3011Z ● Art. 3011Z-2

Sizes: 70 (XXXXS) to 115 (XXXL)

Abdominal supporter with shoulder straps and zippers



● Art. 3007Z ● Art. 3007Z-2

Sizes: 70 (XXXXS) to 115 (XXXL)

Girdle with abdominal extension above the knee and zippers



● Art. 3004Z ● Art. 3004Z-2

Sizes: 70 (XXXXS) to 115 (XXXL)

Girdle with abdominal extension below the knee and zippers



● Art. 3009Z ● Art. 3009Z-2

Sizes: 70 (XXXXS) to 115 (XXXL)

Liposuction garments

Reinforced girdles for superficial liposuction

Designed to selectively compress and sculpt the side areas of the thighs, buttock contours, gluteal fold and abdomen. The arrangement of the internal reinforcements (with double fabric)* favours vertical skin retraction and subjects the affected areas to a micro massage effect that reduces swelling. Closes at the front with a triple row of hook-and-eye closures.

All the models have an open crotch, except for models 3014 and 3014-2, which are fastened with hook-and-eye closures.

Available in alabaster and black.

Above the knee girdle with reinforcement



● Art. 3001 ● Art. 3001-2

Sizes: 70 (XXXXS) to 115 (XXXL)

Below the knee girdle with reinforcement



● Art. 3005 ● Art. 3005-2

Sizes: 70 (XXXXS) to 115 (XXXL)

* Inside view of the reinforcements (Double fabric)



All models

Abdominal support with reinforced front and shoulder straps



● Art. 3014 ● Art. 3014-2

Sizes: 70 (XXXXS) to 115 (XXXL)

Girdle with abdominal extension above the knee and reinforcements



● Art. 3003 ● Art. 3003-2

Sizes: 70 (XXXXS) to 115 (XXXL)

Girdle with abdominal extension below the knee and reinforcements



● Art. 3010 ● Art. 3010-2

Sizes: 70 (XXXXS) to 115 (XXXL)



Liposuction garments

Body shapers

Conceived for the liposuction postoperative period, these garments include a bra. All the models are opened by a triple row of hook-and-eye closures at the front of the garment. All models also have an open crotch except for model 5004, which fastens with hook-and-eye closures.

Available in black.

Classic body shaper



● Art. 5004

Sizes: 75 (XXXS) to 115 (XXXL)

Above the knee body shaper



● Art. 5002

Sizes: 75 (XXXS) to 115 (XXXL)

Below the knee body shaper



● Art. 5003

Sizes: 75 (XXXS) to 115 (XXXL)

Full body shapers with vest

These garments are ideal for combined procedures of breast surgery with multiple liposuction areas.

All the models also have an open crotch, except for models 5010 and 5010-2, which are fastened with hook-and-eye closures. Opening with triple row of hook-and-eye closures.

Available in alabaster and black.

Classic full body shaper



● Art. 5010 ● Art. 5010-2

Sizes: 75 (XXXS) to 115 (XXXL)

Above the knee full body shaper



● Art. 5011 ● Art. 5011-2

Sizes: 75 (XXXS) to 115 (XXXL)

Below the knee full body shaper



● Art. 5012 ● Art. 5012-2

Sizes: 75 (XXXS) to 115 (XXXL)

Liposuction garments

Standard girdles with extended back

Recommended for postoperative periods after abdominal, trochanter, thigh, knee and ankle liposuction, combined with back liposuction. Abdominal opening with a triple row of hook-and-eye closures and shoulder straps with adjustable Velcro.

All the models have an open crotch, except for models 3007E and 3007E-2, which are fastened with hook-and-eye closures.

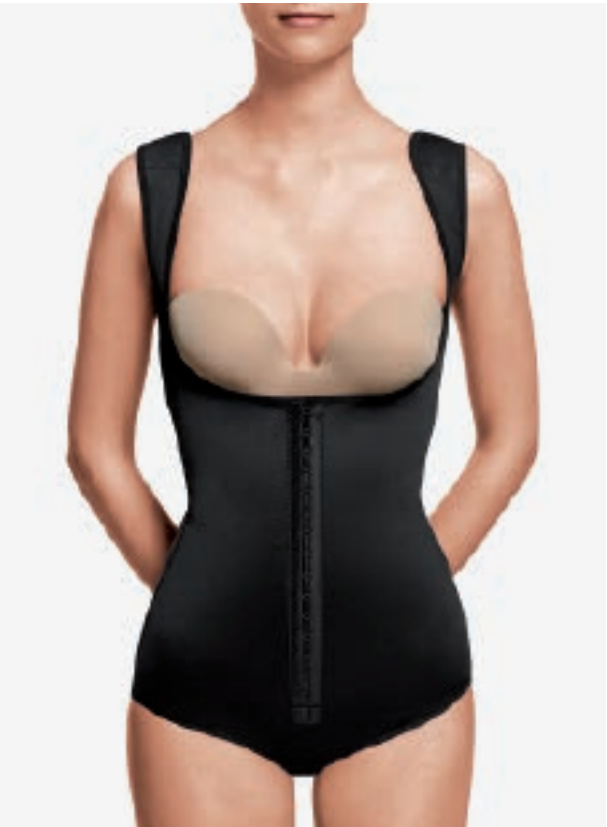
Available in alabaster and black.

Back



All models

Abdominal support with back extension



● Art. 3007E ● Art. 3007E-2

Sizes: 70 (XXXXS) to 115 (XXXL)

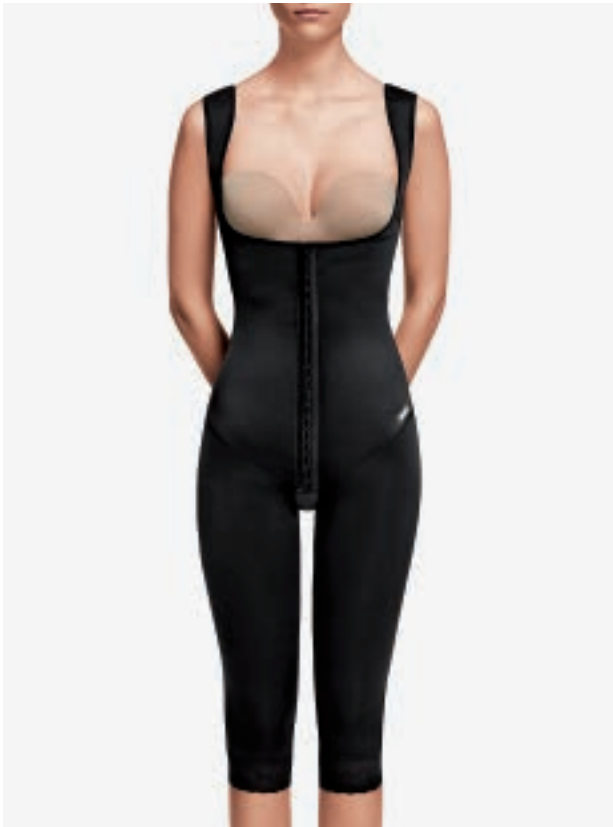
Girdle with abdominal extension above the knee and extended back



● Art. 3004E ● Art. 3004E-2

Sizes: 70 (XXXXS) to 115 (XXXL)

Girdle with abdominal extension below the knee and extended back



● Art. 3009E ● Art. 3009E-2

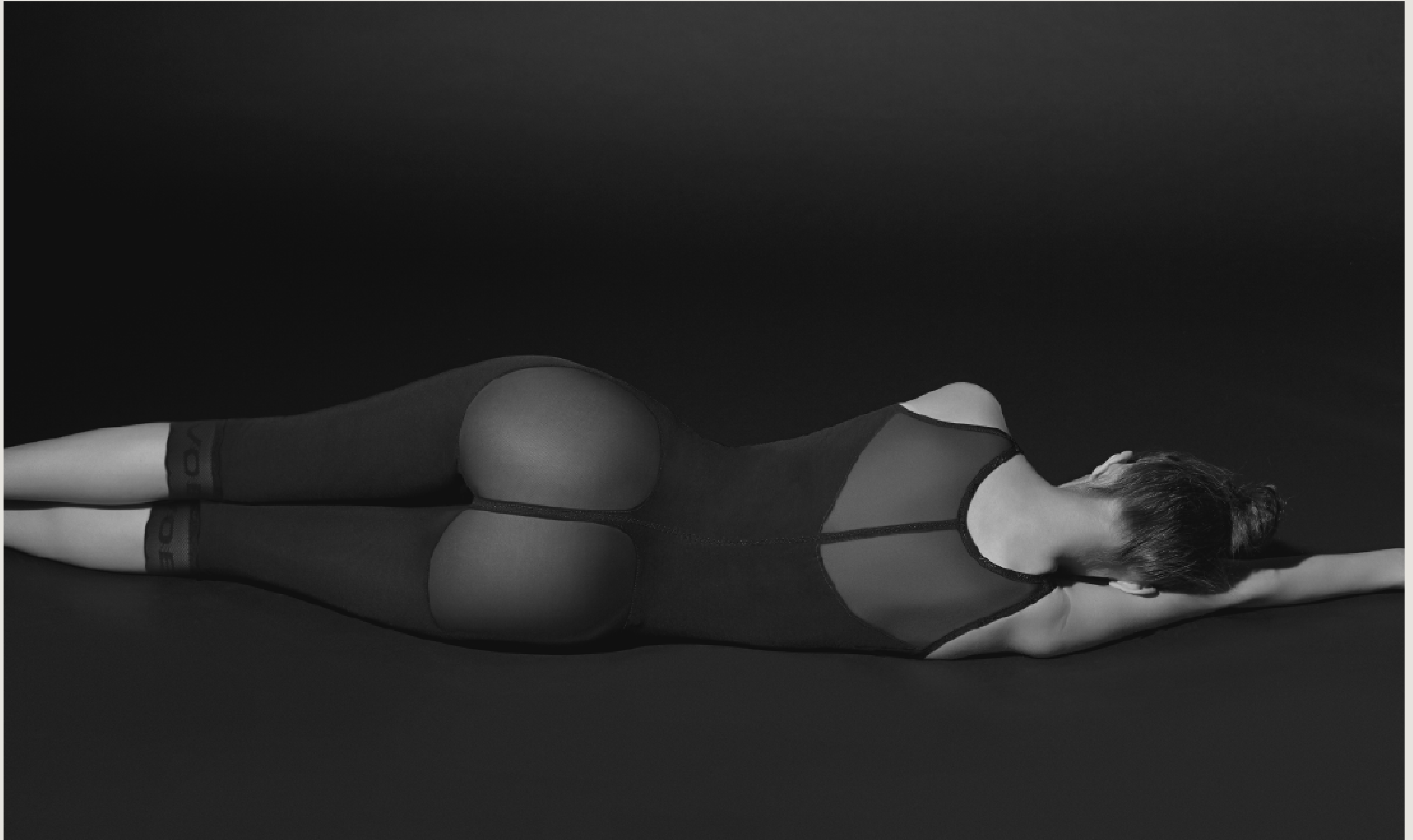
Sizes: 70 (XXXXS) to 115 (XXXL)

Ankle-length girdle with abdominal extension and extended back



● Art. 3012E ● Art. 3012E-2

Sizes: 70 (XXXXS) to 115 (XXXL)



Liposuction garments

Girdles for fat transfer to buttocks

For use in postoperative periods after liposuction combined with fat transfer to the buttock area.

The garments are made with two types of elastic fabric. The inner fabric is for compression, and only covers the areas subjected to liposuction. The outer fabric is a very fine and elastic mesh that exerts minimal pressure on the buttocks.

Front opening with a triple row of hook-and-eye closures. Adjustable shoulder straps. All models have an open crotch.

Available in alabaster and black.

Front detail



Art. 3104 / Art. 3104-2 / Art. 3109 / Art. 3109-2

* Adjustable shoulder straps

Front detail

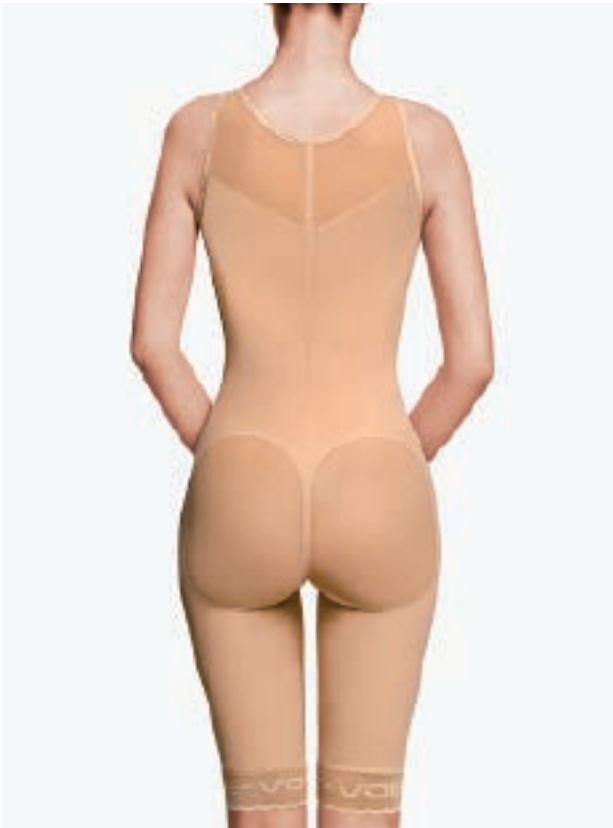


Art. 3104E / Art. 3104E-2 / Art. 3109E / Art. 3109E-2 /

Art. 3112E / Art. 3112E-2

* Adjustable and removable shoulder straps

Fat transfer to buttocks girdle - high waist with extended back - above the knee



● Art. 3104E ● Art. 3104E-2

Sizes: 70 (XXXXS) to 115 (XXXL)

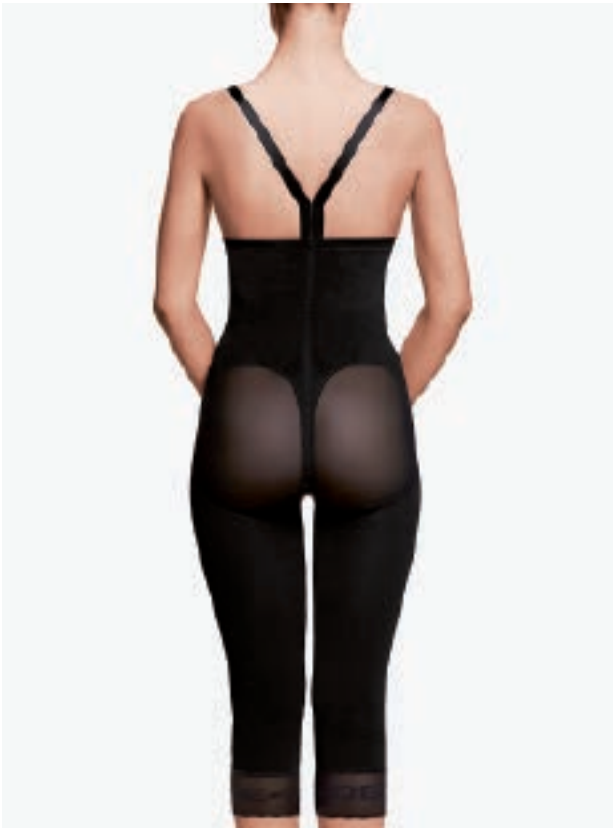
Fat transfer to buttocks girdle - high waist - above the knee



● Art. 3104 ● Art. 3104-2

Sizes: 70 (XXXXS) to 115 (XXXL)

Fat transfer to buttocks girdle - high waist - below the knee



● Art. 3109 ● Art. 3109-2

Sizes: 70 (XXXXS) to 115 (XXXL)

Fat transfer to buttocks girdle - high waist with extended back - below the knee



● Art. 3109E ● Art. 3109E-2

Sizes: 70 (XXXXS) to 115 (XXXL)

Fat transfer to buttocks girdle - high waist with extended back - ankle-length



● Art. 3112E ● Art. 3112E-2

Sizes: 70 (XXXXS) to 115 (XXXL)

Liposuction garments

Second-stage VOE SLIM girdles

VOE SLIM girdles are designed as a garment for use between the garment used in the first stage, and the undergarment the patient usually wears. They help to sculpt the areas that have been treated.

They are made with an elastic fabric composed of elastane fibres and nylon microfibres with a microencapsulated cosmetic incorporated into their texture, which contains a series of active ingredients that are gradually released while it is used, with beneficial effects for the skin. This improves the softness and compactness of the skin and helps to minimise the ‘orange peel’ appearance.

The cosmetic benefits of the VOE SLIM garment persist through numerous wash cycles.
Capsule ingredients: caffeine, retinol (Vit. A), ceramides, fatty acids, Vit. E and Aloe Vera.

Waist shaper
Four flexible spiral steel rods for enhanced support and adjustment. Fastened with a triple row of hook-and-eye closures.



● Slimng 08

Sizes: XS to XXL

High-waisted girdle



● Slimnt 07 ● Slimng 07

Sizes: XS to XXL

High-waisted girdle with ‘push-up’ effect



● Slimng 03

Sizes: XS to XXL

High-waisted girdle above the knee



● Slimnt 04 ● Slimng 04

Sizes: XS to XXL

High-waisted girdle below the knee



● Slimnt 09 ● Slimng 09

Sizes: XS to XXL

**3/4
Legging**



● Slimng 601

Sizes: XS to XXL

Legging



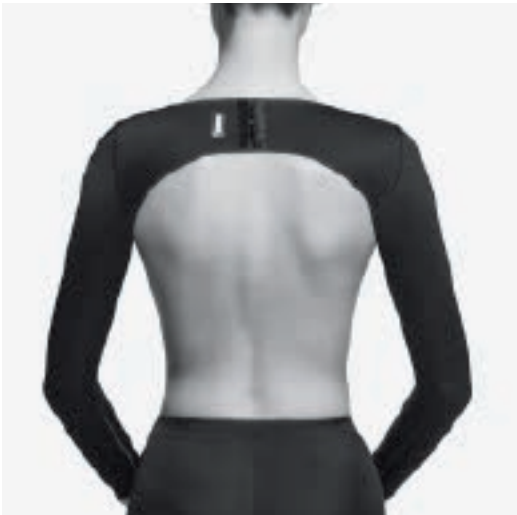
● Slimng 602

Sizes: XS to XXL



Postoperative arm and back garments

Back



Art. 1008 / Art. 1008-2 / Art. 1008Z / Art. 1008Z-2

Back



Art. 1009 / Art. 1009-2

Liposuction garment for arms and back
Adjustable at the back and front by a triple row of hook-and-eye closures. Sleeves with zippers.



● Art. 1009 ● Art. 1009-2

Sizes: XS to XXL

Liposuction sleeves
Fastened by adjustable hook-and-eye closures at the back, and a clear adjustable strap at the front.



● Art. 1008 ● Art. 1008-2

Sizes: XS to XXL

Liposuction sleeves with zipper
Easy donning of the garment thanks to zippers.



● Art. 1008Z ● Art. 1008Z-2

Sizes: XS to XXL

Female liposuction vest
Complete vest with fastening at the front with a triple row of hook-and-eye closures.



● Art. 1011 ● Art. 1011-2

Sizes: XS to XXL

Glove
Helps reduce swelling and improves circulation after arm surgery. Can be worn with any of our vests and sleeves.



● Art. 1012 ● Art. 1012-2

Sizes: S to XL

Postoperative abdominal garments

Suitable after abdominoplasty and abdominal lipectomy, as well as other types of abdominal surgery.



Art. 4008E / Art. 4008E-2

Female abdominal supporter with hook-and-eye closures

The two triple rows of hook-and-eye closures helps the garment to adapt to the body as the swelling subsides. Adjustable and removable shoulder straps.



● Art. 4008 ● Art. 4008-2

Sizes: XXS to XL

Abdominal girdle with back extension and a front double row of hook-and-eye closures

Adjustable shoulder straps with Velcro.



● Art. 4008E ● Art. 4008E-2

Sizes: 70 (XXXXS) to 115 (XXXL)

Female abdominal supporter

Velcro at the side for adjustment. Additional compression by foam padding reinforcement in the scar area. Adjustable and removable shoulder straps.



○ Art. 4002 ● Art. 4002-2

Sizes: XS to XL

Abdominal compression board

Anatomically shaped board for compression after abdominal surgery. (22.5 cm high x 34 cm wide) / (8 ¾" high x 13 ¼" wide)



● Art. 6000

Abdominal/back board

Anatomically shaped board for compression after abdominal surgery. (18 cm high x 33 cm wide) / (7" high x 13" wide)



● Art. 6002

Postoperative abdominal garments

Abdominal binder with three panels



○ Art. 4003. Height 24cm / 9 ½"

Sizes: XS to XL

Abdominal binder with four panels



○ Art. 4004. Height 32 cm / 12 ½"

Sizes: XS to XL

Seamless abdominal binder with three panels



● Art. 4013S. Height 24 cm / 9 ½"

Sizes: XS to XL

Seamless abdominal binder with four panels



● Art. 4014S. Height 32 cm / 12 ½"

Sizes: XS to XL

Seamless abdominal binder. Two adjustable panels



● Art. 4023S. Height 24 cm / 9 ½"

Sizes: XS to XL

Seamless abdominal binder. Three adjustable panels



● Art. 4034S. Height 32 cm / 12 ½"

Sizes: XS to XL



Male collection

Garments suitable for postoperative recovery after gynecomastia, liposuction, abdominal surgery and fat transfer to the buttocks.

Exclusive designs for men. Highest levels of quality in the fabrics, manufacturing and finishes of the garments. Ideal levels of pressure and utmost comfort.

Chest band
For use in the postoperative period following gynecomastia. Two separate bands. Velcro tape adjustment system.



○ Art. 4005
Sizes: S to XL

Seamless chest band
For use in the postoperative period following gynecomastia. Velcro tape adjustment system.



● Art. 4015S
Sizes: S to XL

Sleeveless vest with front opening
For use in the postoperative period following gynecomastia, and other types of chest surgery. Front opening with a triple row of hook-and-eye closures.



● Art. 5007 ● Art. 5007-2
Sizes: 70 (XXXXS) to 115 (XXXL)

Short sleeveless vest with front opening



● Art. 5007S ● Art. 5007S-2
Sizes: 70 (XXXXS) to 115 (XXXL)

Short-sleeved vest with front opening



● Art. 5017 ● Art. 5017-2
Sizes: 70 (XXXXS) to 115 (XXXL)

Sleeveless vest with back fastening
Velcro strap fastening at the back.



● Art. 2006 ● Art. 2006-2
Sizes: 70 (XXXXS) to 115 (XXXL)

Male collection

Briefs
Crotch opening with hook-and-eye closures. Removable shoulder straps.



● Art. 4001 ● Art. 4001-2

Sizes: 70 (XXXXS) to 115 (XXXL)

Briefs with Velcro fastening
Crotch opening with Velcro. Removable shoulder straps.



● Art. 4001V ● Art. 4001V-2

Sizes: 70 (XXXXS) to 115 (XXXL)

Brief with abdominal extension above the knee
After combined abdominal, thigh and gluteal implant surgery.
Open crotch. Front opening with a triple row of hook-and-eye closures. Removable shoulder straps.



● Art. 5008 ● Art. 5008-2

Sizes: 70 (XXXXS) to 115 (XXXL)

Brief with abdominal extension below the knee
Removable shoulder straps.



● Art. 5009 ● Art. 5009-2

Sizes: 70 (XXXXS) to 115 (XXXL)

Male collection

Back



Art. 5106 / Art. 5106-2

Above the knee body shaper
After combined chest, abdomen and thigh surgery. Front opening with a triple row of hook-and-eye closures. Open crotch.



● Art. 5006 ● Art. 5006-2

Sizes: 70 (XXXXS) to 115 (XXXL)

Male body shaper
Adjustable shoulder straps with Velcro and crotch opening with hook-and-eye closures.



● Art. 5005 ● Art. 5005-2

Sizes: 70 (XXXXS) to 115 (XXXL)

Male body shaper with Velcro flap
Crotch opening with Velcro. Adjustable shoulder straps with Velcro.



● Art. 5005V ● Art. 5005V-2

Sizes: 70 (XXXXS) to 115 (XXXL)

Male body shaper for fat transfer
The garment only compresses the areas undergoing liposuction, releasing the buttock area from compression. Open crotch.



● Art. 5106 ● Art. 5106-2

Sizes: 70 (XXXXS) to 115 (XXXL)

Male above knee body shaper with short sleeves



● Art. 5016 ● Art. 5016-2

Sizes: 70 (XXXXS) to 115 (XXXL)

Size Chart

Liposuction garments

| Size | Waist | | Hips | | Thighs | | Calf | |
|------------|--------|-----------------|---------|-----------------|--------|-----------------|-------|-----------------|
| | cm | in. | cm | in. | cm | in. | cm | in. |
| 70 (XXXXS) | 54-58 | 21 1/2 - 22 3/4 | 80-85 | 31 1/2 - 33 1/2 | 43-46 | 16 1/2 - 18 | 27-29 | 10 1/2 - 11 1/2 |
| 75 (XXXS) | 58-64 | 22 3/4 - 25 1/2 | 85-90 | 33 1/2 - 35 1/2 | 46-49 | 18 - 19 1/4 | 29-31 | 11 1/2 - 12 1/4 |
| 80 (XXS) | 64-68 | 25 1/2 - 26 3/4 | 90-95 | 35 1/2 - 37 1/2 | 49-52 | 19 1/4 - 20 1/2 | 31-33 | 12 1/4 - 13 |
| 85 (XS) | 68-72 | 26 3/4 - 28 1/2 | 95-100 | 37 1/2 - 39 1/2 | 52-55 | 20 1/2 - 21 3/4 | 33-36 | 13 - 14 |
| 90 (S) | 72-76 | 28 1/2 - 30 | 100-105 | 39 1/2 - 41 1/2 | 55-58 | 21 3/4 - 23 | 36-39 | 14 - 15 1/2 |
| 95 (M) | 76-80 | 30 - 31 1/2 | 105-110 | 41 1/2 - 43 1/2 | 58-61 | 23 - 24 1/4 | 39-42 | 15 1/4 - 16 1/2 |
| 100 (L) | 80-85 | 31 1/2 - 33 1/2 | 110-115 | 43 1/2 - 45 1/2 | 61-64 | 24 1/4 - 25 1/2 | 42-45 | 16 1/2 - 17 3/4 |
| 105 (XL) | 85-90 | 33 1/2 - 35 1/2 | 115-120 | 45 1/2 - 47 1/2 | 64-67 | 25 1/2 - 26 3/4 | 45-48 | 17 3/4 - 19 |
| 110 (XXL) | 90-95 | 35 1/2 - 37 1/2 | 120-125 | 47 1/2 - 49 1/2 | 67-69 | 26 3/4 - 28 | 48-51 | 19 - 20 |
| 115 (XXXL) | 95-100 | 37 1/2 - 39 1/2 | 125-135 | 49 1/2 - 53 1/2 | 69-71 | 28 - 29 1/4 | 51-53 | 20 - 20 3/4 |

Bras

| Size | Below bust | | Upper bust circumference B cup | | Upper bust circumference C cup | | Upper bust circumference D cup | |
|--------------|------------|-------------|--------------------------------|-------------|--------------------------------|-----------------|--------------------------------|-------------|
| | cm | in. | cm | in. | cm | in. | cm | in. |
| 80 (XXS) | 63-67 | 25 - 26 1/2 | 78-82 | 31 - 32 1/2 | 82-85 | 32 1/2 - 33 1/2 | 85-88 | 33 1/2 - 35 |
| 85 (XS) | 68-72 | 27 - 28 1/2 | 83-87 | 33 - 34 1/2 | 87-90 | 34 1/2 - 35 1/2 | 90-93 | 35 1/2 - 37 |
| 90 (S) | 73-77 | 29 - 30 1/2 | 88-92 | 35 - 36 1/2 | 92-95 | 36 1/2 - 37 1/2 | 95-98 | 37 1/2 - 39 |
| 95 (M) | 78-82 | 31 - 32 1/2 | 93-97 | 37 - 38 1/2 | 97-100 | 38 1/2 - 39 1/2 | 100-103 | 39 1/2 - 41 |
| 100 (L) | 83-87 | 33 - 34 1/2 | 98-102 | 39 - 40 1/2 | 102-105 | 40 1/2 - 41 1/2 | 105-108 | 39 1/2 - 41 |
| 105 (XL) | 88-92 | 35 - 36 1/2 | 103-107 | 41 - 42 1/2 | 107-110 | 42 1/2 - 43 1/2 | 110-113 | 41 1/2 - 43 |
| 110 (XXL) | 93-97 | 37 - 38 1/2 | 108-112 | 43 - 44 1/2 | 112-115 | 44 1/2 - 45 1/2 | 115-118 | 43 1/2 - 45 |
| 115 (XXXL) | 98-102 | 39 - 40 1/2 | 113-117 | 45 - 46 1/2 | 117-120 | 46 1/2 - 47 1/2 | 120-123 | 45 1/2 - 47 |
| 120 (XXXXL) | 103-107 | 41 - 42 1/2 | 118-122 | 47 - 48 1/2 | 122-125 | 48 1/2 - 49 1/2 | 125-128 | 47 1/2 - 49 |
| 125 (XXXXXL) | 108-112 | 43 - 44 1/2 | 123-127 | 49 - 50 1/2 | 127-130 | 50 1/2 - 51 1/2 | 130-133 | 49 1/2 - 51 |

Basic, Ivory and Nora bra

| Below bust | 63-67 cm | 68-72 cm | 73-77 cm | 78-82 cm | 83-87 cm | 88-92 cm | 93-100 cm |
|------------|-----------------|-----------------|-----------------|-----------------|-----------------|-----------------|-----------------|
| | 25-26 1/2 in | 27-28 1/2 in | 29-30 1/2 in | 31-32 1/2 in | 33-34 1/2 in | 35-36 1/2 in | 37-39 1/2 in |
| CUPS | B | S | S | M | M | M | L |
| | C | S | M | M | M | L | L |
| | D | S | M | M | L | L | L |
| | | S | M | M | L | L | L |
| | | S | M | M | L | L | L |
| | | S | M | M | L | L | L |

Size is determined by a combination of both, the below bust circumference and the cup size

Bra size conversion table

| | | | | | | |
|---------------|----|----|----|----|-----|-----|
| Spain-France | 80 | 85 | 90 | 95 | 100 | 105 |
| Germany | 65 | 70 | 75 | 80 | 85 | 90 |
| Italy | 1 | 2 | 3 | 4 | 5 | 6 |
| U.K. - U.S.A. | 30 | 32 | 34 | 36 | 38 | 40 |

Glove

Art. 1012 - 1012-2

| Size | Circunference of palm | |
|------|-----------------------|-----------|
| | cm | in. |
| | cm | in. |
| S | 15-18 | 5 3/4 - 7 |
| M | 18-21 | 7 - 8 |
| L | 21-23 | 8 - 9 |
| XL | 23-25 | 9 - 9 3/4 |

Anatomic chest band

Art. 2105 - 2105N

| Size | Above bust circumference | |
|------|--------------------------|---------------------------------------|
| | cm | in. |
| S | 74-83 | 29 - 32 ^{1/2} |
| M | 83-92 | 32 ^{1/2} - 36 |
| L | 92-101 | 36 - 39 ^{1/2} |
| XL | 101-116 | 39 ^{1/2} - 45 ^{1/2} |

Chin-neck masks

| Size | Neck circumference | |
|------|--------------------|---------------------------------------|
| | cm | in. |
| S | 27-31 | 10 ^{3/4} - 12 ^{1/4} |
| M | 32-37 | 12 ^{3/4} - 14 ^{1/2} |
| L | 38-46 | 15 - 18 ^{3/4} |

Arm and back postoperative garments

Art: 1008 - 1008-2 - 1008Z - 1008Z-2 -1009 - 1009-2 - 1011 - 1011-2

| Size | Measurement below bust | | Upper arm circumference | |
|------|------------------------|---------------------------------------|-------------------------|---------------------------------------|
| | cm | in. | cm | in. |
| XS | 63-70 | 24 ^{3/4} - 27 ^{1/2} | 21-24 | 8 - 9 ^{1/2} |
| S | 70-77 | 27 ^{1/2} - 30 ^{1/4} | 24-27 | 9 ^{1/2} - 10 ^{3/4} |
| M | 77-84 | 30 ^{1/4} - 33 | 27-30 | 10 ^{3/4} - 12 |
| L | 84-91 | 33 - 35 ^{3/4} | 30-33 | 12 - 13 ^{1/4} |
| XL | 91-98 | 35 ^{3/4} - 38 ^{1/2} | 33-36 | 13 ^{1/4} - 14 ^{1/2} |
| XXL | 98-105 | 38 ^{1/2} - 41 ^{1/2} | 36-40 | 14 ^{1/2} - 16 |

Male collection

| Size | Maximum chest circumference | | Waist circumference | | Thighs circumference | |
|------------|-----------------------------|---|---------------------|---|----------------------|---|
| | cm | in. | cm | in. | cm | in. |
| 70 (XXXXS) | 85-90 | 33 ¹ / ₂ - 35 ¹ / ₂ | 75-80 | 29 ¹ / ₂ - 31 ¹ / ₂ | 41-43 | 15 ¹ / ₄ - 16 ¹ / ₂ |
| 75 (XXXS) | 90-95 | 35 ¹ / ₂ - 37 ¹ / ₂ | 80-85 | 31 ¹ / ₂ - 33 ¹ / ₂ | 43-46 | 16 ¹ / ₂ - 18 |
| 80 (XXS) | 95-100 | 37 ¹ / ₂ - 39 ¹ / ₂ | 85-90 | 33 ¹ / ₂ - 35 ¹ / ₂ | 46-49 | 18 - 19 ¹ / ₄ |
| 85 (XS) | 100-105 | 39 ¹ / ₂ - 41 ¹ / ₂ | 90-95 | 35 ¹ / ₂ - 37 ¹ / ₂ | 49-52 | 19 ¹ / ₄ - 20 ¹ / ₂ |
| 90 (S) | 105-110 | 41 ¹ / ₂ - 43 ¹ / ₂ | 95-100 | 37 ¹ / ₂ - 39 ¹ / ₂ | 52-55 | 20 ¹ / ₂ - 21 ³ / ₄ |
| 95 (M) | 110-115 | 43 ¹ / ₂ - 45 ¹ / ₂ | 100-105 | 39 ¹ / ₂ - 41 ¹ / ₂ | 55-58 | 21 ³ / ₄ - 23 |
| 100 (L) | 115-120 | 45 ¹ / ₂ - 47 ¹ / ₂ | 105-110 | 41 ¹ / ₂ - 43 ¹ / ₂ | 58-61 | 23 - 24 ¹ / ₄ |
| 105 (XL) | 120-125 | 47 ¹ / ₂ - 49 ¹ / ₂ | 110-115 | 43 ¹ / ₂ - 45 ¹ / ₂ | 61-64 | 24 ¹ / ₄ - 25 ¹ / ₂ |
| 110 (XXL) | 125-130 | 49 ¹ / ₂ - 51 ¹ / ₂ | 115-120 | 45 ¹ / ₂ - 47 ¹ / ₂ | 64-67 | 25 ¹ / ₂ - 26 ³ / ₄ |
| 115 (XXXL) | 130-135 | 51 ¹ / ₂ - 53 ¹ / ₂ | 120-125 | 47 ¹ / ₂ - 49 ¹ / ₂ | 67-70 | 26 ³ / ₄ - 28 |

Second-stage VOE SLIM garments

| Size | Waist | | Hips | | Thighs | |
|------|--------|---------------------------------------|---------|---------------------------------------|--------|---------------------------------------|
| | cm | in. | cm | in. | cm | in. |
| XS | 63-70 | 24 ^{3/4} - 27 ^{1/2} | 80-85 | 29 ^{1/2} - 33 ^{1/2} | 44-47 | 17 ^{1/2} - 18 ^{1/2} |
| S | 70-77 | 27 ^{1/2} - 30 ^{1/4} | 85-95 | 33 ^{1/2} - 37 ^{1/2} | 47-50 | 18 ^{1/2} - 19 ^{1/2} |
| M | 77-84 | 30 ^{1/4} - 33 | 95-105 | 37 ^{1/2} - 41 ^{1/2} | 50-55 | 19 ^{1/2} - 21 ^{1/2} |
| L | 84-91 | 33 - 35 ^{3/4} | 105-115 | 41 ^{1/2} - 45 ^{1/2} | 55-59 | 21 ^{1/2} - 23 ^{1/2} |
| XL | 91-98 | 35 ^{3/4} - 38 ^{1/2} | 115-125 | 45 ^{1/2} - 49 ^{1/2} | 59-64 | 23 ^{1/2} - 25 ^{1/2} |
| XXL | 98-105 | 38 ^{1/2} - 41 ^{1/2} | 125-135 | 49 ^{1/2} - 53 ^{1/2} | 64-69 | 25 ^{1/2} - 27 ^{1/2} |

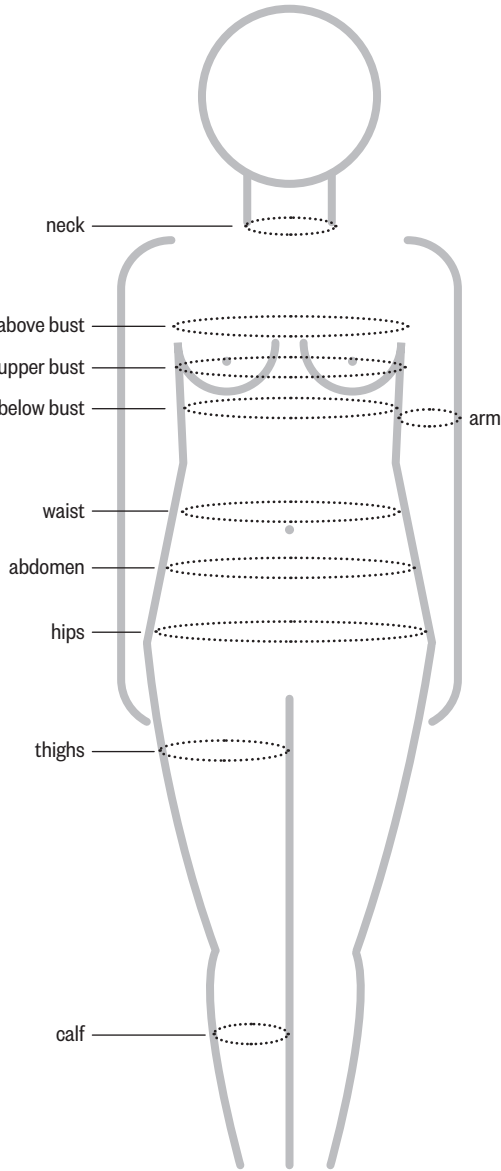
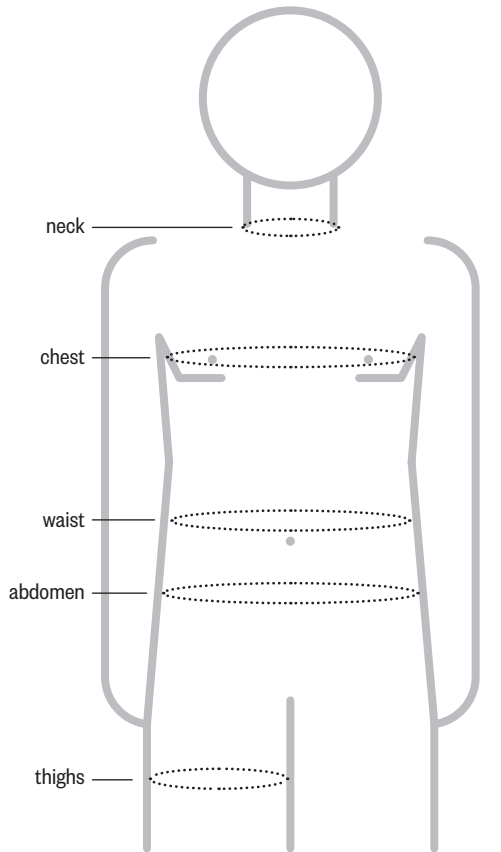
Female supporters

Art: 4002 - 4002-2 - 4008 - 4008-2

| Size | Abdomen circumference | |
|------|-----------------------|---------------------------------------|
| | cm | in. |
| XXS | 60-70 | 23 ^{1/2} - 27 ^{1/2} |
| XS | 70-80 | 27 ^{1/2} - 31 ^{1/2} |
| S | 80-90 | 31 ^{1/2} - 35 ^{1/2} |
| M | 90-100 | 35 ^{1/2} - 39 ^{1/2} |
| L | 100-110 | 39 ^{1/2} - 43 ^{1/2} |
| XL | 110-120 | 43 ^{1/2} - 47 ^{1/2} |

Chest and abdominal binders

| Size | Abdomen / Chest circumference | |
|------|-------------------------------|---------------------------------------|
| | cm | in. |
| XS | 50-70 | 19 ^{1/2} - 27 ^{1/2} |
| S | 70-90 | 27 ^{1/2} - 35 ^{1/2} |
| M | 90-110 | 35 ^{1/2} - 43 ^{1/2} |
| L | 110-130 | 43 ^{1/2} - 51 ^{1/2} |
| XL | 130-150 | 51 ^{1/2} - 59 ^{1/2} |



Special sizes are available by custom order (all styles)

* Check price

VOE





Catherine Cassel

GENERAL MANAGER

MEDROMA

www.medroma.co.za

Cell: 083 274 7820
Office: 012 - 991 2227
Email: catherine@medroma.co.za
Orders: orders@medroma.co.za

ORTHOTICS

PROSTHETICS

COMPRESSION GARMENTS

Medroma (Pty) Ltd | Registration number: 2023/937651/07
Office 109 | First Floor | Soetdoring Office Park | Doringkloof | Centurion | 0157
PO Box 25 | Southdowns | Irene | 0123

Jolanda Hayes

BUSINESS DEVELOPMENT MANAGER

MEDROMA

www.medroma.co.za

Cell: 081 047 0531
Office: 012 - 991 2227
Email: jolanda@medroma.co.za
Orders: orders@medroma.co.za

ORTHOTICS

PROSTHETICS

COMPRESSION GARMENTS

Medroma (Pty) Ltd | Registration number: 2023/937651/07
Office 109 | First Floor | Soetdoring Office Park | Doringkloof | Centurion | 0157
PO Box 25 | Southdowns | Irene | 0123

VOE



www.voe.es

VOE, S.A.

Aribau, 39
08011 Barcelona (España)

T +34 93 451 64 52
info@voe.es