

MEDROMA

VOE

BURN
GARMENTS

During the postoperative period of the burn patient, the use of compressive elastic garments is recommended for the treatment of any trauma which is in the healing period and susceptible to hypertrophic scarring. At VOE, for over 30 years, we have been manufacturing specialized burn garments.

Our garments are made of elastic fabric and are specially designed to maintain adequate and constant pressure over the areas during the healing process. In this way, hypertrophic scarring is prevented and controlled with the consequent reduction in the after effects of disfigurement.

In the catalogue, the garments are grouped by family, based on the different parts of the body.

.....
Lower extremities	4
Trunk	6
Head and neck	8
Superior limbs	10
Sternal shaper	13
Standard gloves “Light”	13
Size chart	14
.....

MEDROMA

Characteristics

- Produced using multidirectional breathable elastic fabric.
- Effective yet comfortable.
- Very stringent quality control during design and production.
- Fast flexible service and delivery.

Garments are made to order and can be custom made or standard.

Custom made burn garments

- The most effective and recommended option. Taking correct measurements of the patient guarantee a more accurate, uniform and adequate pressure over the treatment area.
- Where required, different types of reinforcing elements can be incorporated into the garment in order to increase effectiveness in areas where compression is difficult or where additional pressure is required.
- Specific order forms (PDF) are available with instructions for taking measurements.

Standard burn garments

- These garments offer the surgeon an effective alternative for those patients who for various reasons are not prescribed a custom made pressure garment.
- Available in a wide range of sizes for children and adults.
- Attractive prices.
- Manufactured from the same multidirectional breathable elastic material as used for the custom made garments.
- Refer to our size chart to order the appropriate garment size for your patient.
- Any small adjustments which the garments may require should be carried out by the customer.

Recommendations

The garments should be used as soon as the medical specialist considers it appropriate. It is recommended that they are worn 24 hours a day, being removed only at bath times.

Oils and creams used in the treatment of scar tissue will adversely affect the garment; it is therefore recommended that direct contact should be avoided.

The length of the treatment will depend on the evolution of the injury, which should be evaluated by the doctor concerned. For treatment of the sequelae of burn injuries, it is recommended that the garment be worn between 12 and 18 months.

It is recommended that the patient alternates between two sets of each garment.

The garments should be washed in cold water, with neutral soap. They should be dried in the open air, avoiding direct exposure to the sun.

The garments should be replaced in the following circumstances:

- In case of significant weight fluctuation of the patient.
- Where the fabric loses elasticity as a result of constant stretching.

Proper care will ensure that garments maintain their elasticity for approximately two months.

MEDROMA

Lower extremities

Anklet



- Custom made Ref. 9301
- Adult Standard Ref. 9301-5 (sizes S, M, L, XL)
- Children Standard Ref. 9301-50 (sizes S, M, L)

Knee length stocking



- Custom made Ref. 9302
- Adult Standard Ref. 9302-5 (sizes S, M, L, XL)
- Children Standard Ref. 9302-50 (sizes S, M, L)

Thigh length stocking



- Custom made Ref. 9303
- Adult Standard Ref. 9303-5 (sizes S, M, L, XL)
- Children Standard Ref. 9303-50 (sizes S, M, L)

Tubular leg bandage



- Custom made Ref. 9304

Lower extremities

Waist height two legs



- Custom made Ref. 9307
- Adult Standard Ref. 9307-5 (sizes S, M, L, XL)
- Children Standard Ref. 9307-50 (sizes S, M, L)

Panty girdle



- Custom made Ref. 9305
- Adult Standard Ref. 9305-5 (sizes S, M, L, XL)
- Children Standard Ref. 9305-50 (sizes S, M, L)

Waist height one leg



- Custom made Ref. 9306
- Adult Standard Ref. 9306-5 (sizes S, M, L, XL)
- Children Standard Ref. 9306-50 (sizes S, M, L)



Trunk

Sleeveless vest for women



- Custom made Ref. 9103
- Adult Standard Ref. 9103-5 (sizes S, M, L, XL)

Short-sleeved vest for women



- Custom made Ref. 9113
- Adult Standard Ref. 9113-5 (sizes S, M, L, XL)

Long-sleeved vest for women



- Custom made Ref. 9123
- Adult Standard Ref. 9123-5 (sizes S, M, L, XL)

Trunk

Sleeveless vest for men



- Custom made Ref. 9101
- Adult Standard Ref. 9101-5 (sizes S, M, L, XL)
- Children Standard Ref. 9101-50 (sizes S, M, L)

Short-sleeved vest for men



- Custom made Ref. 9111
- Adult Standard Ref. 9111-5 (sizes S, M, L, XL)
- Children Standard Ref. 9111-50 (sizes S, M, L)

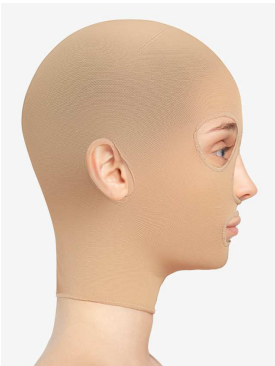
Long-sleeved vest for men



- Custom made Ref. 9121
- Adult Standard Ref. 9121-5 (sizes S, M, L, XL)
- Children Standard Ref. 9121-50 (sizes S, M, L)

Head and neck

Closed mask



- Custom made Ref. 9002
- Adult Standard Ref. 9002-5 (sizes S, M, L, XL)
- Children Standard Ref. 9002-50 (sizes S, M, L)

Open mask



- Custom made Ref. 9001
- Adult Standard Ref. 9001-5 (sizes S, M, L, XL)
- Children Standard Ref. 9001-50 (sizes S, M, L)

Head and neck

Chin extension collar



- Custom made Ref. 9006
- Chin extension collar made of soft foam easily adaptable to the neck with Velcro closure.

Chin neck strap



- Custom made Ref. 9003
- Adult Standard Ref. 9003-5 (sizes M, L)
- Children Standard Ref. 9003-50 (sizes M, L)

Superior limbs

Gauntlet



- Custom made Ref. 9208
- Adult Standard Ref. 9208-5 (sizes S, M, L, XL)

Open Glove



- Custom made Ref. 9204
- Adult Standard Ref. 9204-5 (sizes S, M, L, XL)

Glove with covered fingers



- Custom made Ref. 9203

Superior limbs

Arm sleeve and glove



- Custom made Ref. 9206

Glove to elbow



- Custom made Ref. 9205

Arm sleeve



- Custom made Ref. 9201
- Adult Standard Ref. 9201-5 (sizes S, M, L, XL)
- Children Standard Ref. 9201-50 (sizes S, M, L)

Superior limbs

Arm sleeve and shoulder flap



- Custom made Ref. 9202
- Adult Standard Ref. 9202-5 (sizes S, M, L, XL)
- Children Standard Ref. 9202-50 (sizes S, M, L)

Arm sleeve, glove and shoulder flap



- Custom made Ref. 9207

Sternal shaper



- Standard Ref. 2004 (sizes S, M, L, XL, XXL)

Unisex garment, suitable for treatment of hypertrophic scars, especially during the post-operative period following cardiovascular surgery. It can also be used as a breast separator. Very comfortable, with adjustable Velcro straps for the shoulders as well as the area below the bust.

Standard gloves “Light”



Made from a very soft and comfortable material with moderate compression. Ideal for early application of pressure therapy while waiting to be able to use the final custom made gloves.

- Standard Ref. 9452 (sizes S, M, L, XL)

Size chart

Standard garments

Anklet											
Ref. 9301-5											

Knee length stocking Ref. 9302-5	Adult sizes				Child sizes									
	S		M		L		XL		S		M		L	
	cm	in.	cm	in.	cm	in.	cm	in.	cm	in.	cm	in.	cm	in.
	Circumference													
Ankle	18-21	7-8	21-24	8-9½	24-27	9½-10½	27-30	10½-12	13-15	5½-6½	15-17	5½-6½	17-19	6¾-7½
Calf	28-31	11-12½	31-34	12½-13½	34-37	13½-14½	37-40	14½-16	17-20	6¾-7½	20-23	7-9	23-26	9-10½

High length stocking Ref. 9303-5	Adult sizes				Child sizes									
	S		M		L		XL		S		M		L	
	Circumference		Circumference		Circumference		Circumference		Circumference		Circumference		Circumference	
	cm	in.	cm	in.	cm	in.	cm	in.	cm	in.	cm	in.	cm	in.
Ankle	18-21	7-8	21-24	8-9½	24-27	9½-10½	27-30	10½-12	13-15	5½-6½	15-17	6½-6¾	17-19	6¾-7½
Calf	28-31	11-12½	31-34	12½-13½	34-37	13½-14½	37-40	14½-16	17-20	6¾-7½	20-23	7½-9	23-26	9-10½
Thigh	42-47	16½-18½	47-52	18½-20½	52-57	20½-22½	57-65	22½-25½	27-30	10½-12	30-33	12-13½	33-36	13½-14½

Panty girdle Ref. 9305-5	Adult sizes				Child sizes									
	S		M		L		XL		S		M		L	
	Circumference		Circumference		Circumference		Circumference		Circumference		Circumference		Circumference	
	cm	in.	cm	in.	cm	in.	cm	in.	cm	in.	cm	in.	cm	in.
Thigh	42-47	16½-18½	47-52	18½-20½	52-57	20½-22½	57-65	22½-25½	27-30	10½-12	30-33	12-13½	33-36	13½-14½
Hips	80-90	31½-35½	90-100	35½-39½	100-110	39½-43½	110-125	43½-49½	44-51	17½-20	51-58	20-22½	58-65	22½-25½
Waist	60-70	23½-27½	70-80	27½-31½	80-90	31½-35½	90-105	35½-41½	41-47	15½-18½	47-53	18½-20½	53-60	20½-23½

Arm sleeve / Arm sleeve with shoulder flap														
Ref. 9201-5 Ref. 9202-5	Adult sizes				Child sizes									
	S		M		L		XL		S		M		L	
	cm	in.	cm	in.	cm	in.	cm	in.	cm	in.	cm	in.	cm	in.
Circumference														
Wrist	15-17	5½-6½	17-19	6½-7½	19-21	7½-8	21-23	8-9	11-12.5	4½-5	12.5-13.5	5-5½	13.5-15.5	5½-5½
Elbow	21-25	8-9½	25-29	9½-11½	29-33	11½-13½	33-38	13½-14½	15-17	5½-6½	17-19	6½-7½	19-21	7½-8
Arm	23-28	9-11	28-33	11-13½	33-39	13½-15½	39-46	15½-18	16-18	6½-7	18-20	7-7½	20-22	7½-8½

Closed mask / Open mask														
Ref. 9002-5 Ref. 9001-5	Adult sizes						Child sizes							
	S		M		L		XL		S	M	L			
	cm	in.	cm	in.	cm	in.	cm	in.	cm	in.	cm	in.		
Circumference														
Neck	32-35	12½-13½	35-38	13½-15	38-42	15-16½	42-48	16½-18½	25-27	9½-10½	27-29	10½-11½	29-31	11½-12½

Sternal shaper Ref. 2004	S		M		L		XL		XXL	
	cm	in	cm	in	cm	in	cm	in	cm	in
	23-75	4½-29½	75-87	29½-34	87-100	34-39	100-115	39-45	115-130	45-50½

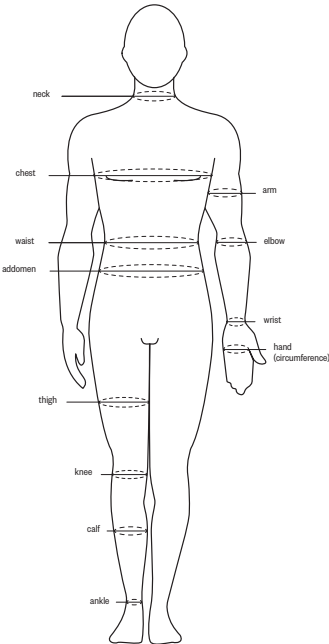
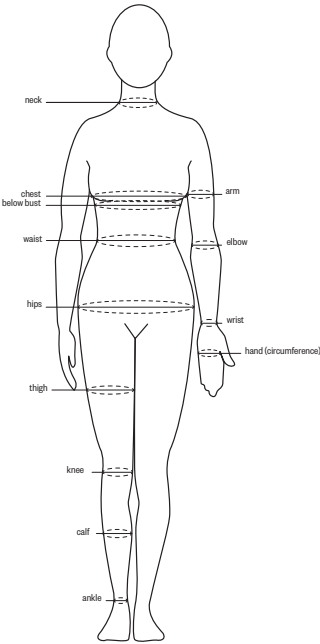


High waist girdle (All models) *	Adult sizes				Child sizes			
	S		M		L		XL	
	cm in.	cm in.	cm in.	cm in.	cm in.	cm in.	cm in.	cm in.
Circumference	cm in.	cm in.	cm in.	cm in.	cm in.	cm in.	cm in.	cm in.
Ankle	18-21 7-8	21-24 8-9½	24-27 9½-10½	27-30 10½-12	13-15 5-5½	15-17 5½-6½	17-19 6½-7½	
Calf	28-31 11-12½	31-34 12½-13½	34-37 13½-14½	37-40 14½-16	17-20 6½-7½	20-23 7½-9	23-26 9-10½	
Thigh	42-47 16½-18½	47-52 18½-20½	52-57 20½-22½	57-65 22½-25½	27-30 10½-12	30-33 12-13½	33-36 13½-14½	
Hips	80-90 31½-35½	90-100 35½-39½	100-110 39½-43½	110-125 43½-49½	44-51 17½-20	51-58 20-22½	58-65 22½-25½	
Waist	65-75 25½-29½	75-85 29½-33½	85-100 33½-39½	100-115 39½-45½	50-55 19½-21½	55-60 21½-23½	60-65 23½-25½	

Vests (All models) *	Adult sizes				Child sizes			
	S		M		L		XL	
	cm in.	cm in.	cm in.	cm in.	cm in.	cm in.	cm in.	cm in.
Circumference	cm in.	cm in.	cm in.	cm in.	cm in.	cm in.	cm in.	cm in.
Wrist	15-17 5½-6½	17-19 6½-7½	19-21 7½-8	21-23 8-9	11-12.5 4½-5	12.5-13.5 5-5½	13.5-15.5 5½-6½	
Elbow	21-25 8-9½	25-29 9½-11½	29-33 11½-13½	33-38 13½-15	15-17 5½-6½	17-19 6½-7½	19-21 7½-8	
Arm	23-28 9-11	28-33 11-13½	33-39 13½-15½	39-46 15½-18	16-18 6½-7	18-20 7-7½	20-22 7½-8½	
Below bust	75-85 29½-33½	85-95 33½-37½	95-105 37½-41½	105-115 41½-45½	53-58 20½-22½	58-63 22½-24½	63-68 24½-26½	
Bra size	70-80 27½-31½	80-95 31½-37½	95-105 37½-41½	105-115 41½-45½	-	-	-	
Waist	65-75 25½-29½	75-85 29½-33½	85-100 33½-39½	100-115 39½-45½	50-55 19½-21½	55-60 21½-23½	60-65 23½-25½	

Chin neck strap Ref. 9003-5	Adult sizes		Child sizes	
	M	L	M	L
	cm in	cm in	cm in	cm in
Circumference	cm in	cm in	cm in	cm in
Neck	32-38 12½-15	38-46 15-18	24-28 9½-11	28-32 11-12½

Open glove / Mitt / Standard Light gloves Ref. 9204-5 Ref. 9208-5 Ref. 9452	Adult sizes			
	S		M	
	cm in.	cm in.	cm in.	cm in.
Circumference	cm in.	cm in.	cm in.	cm in.
Palm	15-18 5½-7	18-21 7-8	21-23 8-9	23-25 9-9½





VOE, S.A.

Aribau, 39
08011 Barcelona (Spain)

www.voe.es

Jolanda Hayes

BUSINESS DEVELOPMENT MANAGER

Cell: 081 047 0531
Office: 012 - 991 2227
Email: jolanda@medroma.co.za
Orders: orders@medroma.co.za

MEDROMA

www.medroma.co.za

ORTHOTICS

PROSTHETICS

COMPRESSION GARMENTS

Medroma (Pty) Ltd | Registration number: 2023/937651/07
Office 109 | First Floor | Soetdoring Office Park | Doringkloof | Centurion | 0157
PO Box 25 | Southdowns | Irene | 0123