

2023

# Cypress Adaptive

An Extension of Yourself

**MEDROMA**

[www.medroma.co.za](http://www.medroma.co.za)

ORTHOTICS

PROSTHETICS

COMPRESSION GARMENTS



*Cypress Adaptive is driven to provide the highest quality products at cost-effective pricing unprecedented in the prosthetics industry*

**Catherine Cassel**  
GENERAL MANAGER

Cell: 083 274 7820  
Office: 012 - 991 2227  
Email: [catherine@medroma.co.za](mailto:catherine@medroma.co.za)  
Orders: [orders@medroma.co.za](mailto:orders@medroma.co.za)

**MEDROMA**

[www.medroma.co.za](http://www.medroma.co.za)

ORTHOTICS

PROSTHETICS

COMPRESSION GARMENTS

**Marike du Preez**  
HEAD OF PROSTHETICS

Cell: 083 381 0454  
Office: 012 - 991 2227  
Email: [marike@medroma.co.za](mailto:marike@medroma.co.za)  
Orders: [orders@medroma.co.za](mailto:orders@medroma.co.za)

**MEDROMA**

[www.medroma.co.za](http://www.medroma.co.za)

ORTHOTICS

PROSTHETICS

COMPRESSION GARMENTS

## Table of Contents

Cypress 4 Hole Plates .....	Page 5
Dummy Plug .....	Page 5
Elevated Vacuum Valves • <b><i>In Line</i></b> ( <i>Distal to Socket</i> ) .....	Pages 6-7
Valves for Elevated Vacuum • <b><i>Socket Mounted</i></b> .....	Pages 7-8
Passive Expulsion Valves • <b><i>In Line</i></b> ( <i>Distal to Socket</i> ) .....	Page 9
Passive Expulsion Valves • <b><i>Socket Mounted</i></b> .....	Pages 10-12
Valve Kits .....	Page 13
Symphonie Aqua System .....	Pages 15-17
Symphonie Aqua Accessories .....	Page 17
Symphonie Aqua Sleeve .....	Page 18
Neo-Flex Suspension Sleeves .....	Page 19
Elevated Vacuum Systems .....	Page 21
Hydraulic Mechanical Ankles .....	Page 21
Prosthetic Knees .....	Page 22
Price List .....	Pages 23-26
Warranty Information .....	Page 27

# Valves For All Applications



**Aria**® Valve



**Aria**® AK Valve



**Aria**® Hybrid Valve



**Aria**® Valve Plus



**New for Upper and Lower Limb!**

**Aria**® Universal Mini Valve



**Aria**® Aria Safety Barb



**Aria**® HV Plate Valve



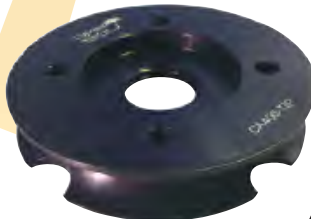
**Aria**® Plate Valve



**Aria**® HV Valve Insert



**Aria**® Dummy Plug Insert



Cypress 4 Hole Tie-in-Plate



**Aria**® Auto Expulsion Valve Insert



**Aria**® 90° HV Valve Insert



# Cypress Adaptive 4-Hole Plate

## Cypress 4 Hole Tie-in-Plate



Part Nr: CA400-TIP

Use alone or with any  
Aria Thread in Valve Inserts  
or Aria Plate Valves.

## **Aria**® Mini Valve Insert & 4-Hole Plate Insert Key



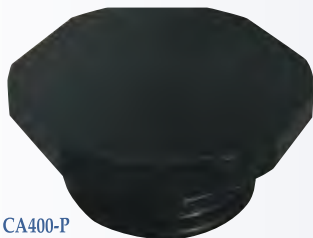
Part Nr: CA100-MVK

## Cypress Low Profile 4-Hole Plate



Part Nr: CA400-LP

## **Aria**® Dummy Plug Insert



Part Nr: CA400-P

## **Aria**® Mini Valve Insert & 4-Hole Plate Insert Key



Part Nr: CA100-MVK

## Aria® HV Plate Valve



Part Nr: CA300-AHVP

Auto-Expulsion & Push Button Release  
with Attachment for Vacuum Systems



Aria® Valve Tool

Part Nr: CA300-AVT

## Aria® HV Plate Valve Replacement Parts

Aria Valve Spring  
CA200-S (2 pk)



Aria Valve Vent Spool  
CA200-AVS



Aria Valve Diaphragm  
CA-diaphragm (2 pk)



Aria HV Plate Valve Sealing Gasket  
(for use with CA300-AHVP)  
CA300-G (2 pk)



Aria Plate Valve Release Button  
CA300-RB



Aria Safety Barb Internal Check Valve  
CA300-SBIV (2 pk)



90 Degree Stainless Barb  
CA300-B90 (2 pk)



## Aria® HV Valve Insert



Part Nr: CA400-HV (Straight Barb)

## Aria® HV Valve Insert Replacement Parts

Straight Stainless Barb  
CA300-BST (2 pk)



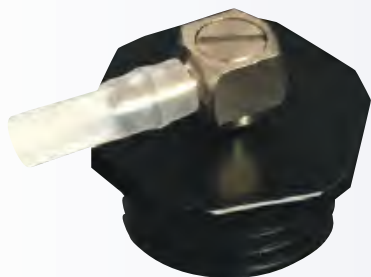
Aria® Mini Valve Insert &  
4-Hole Plate Insert Key



Part Nr: CA100-MVK

# Elevated Vacuum Valves • *In Line* (Distal to Socket)

## Aria® 90° HV Valve Insert



Part Nr.: CA400-HV9 (90° Barb)

## Aria® 90° HV Valve Insert Replacement Parts

90 Degree Stainless Barb  
CA300-B90 (2 pk)



Aria® Mini Valve Insert &  
4-Hole Plate Insert Key



Part Nr.: CA100-MVK

# Elevated Vacuum Valves • *Socket Mounted*

## Aria® Hybrid Valve



Part Nr.: CA300-HYV

Auto-expulsion function with a push button release

Installs into ALL prosthetic socket materials

Built in barb attachment

Threaded Housing included

## Aria® Hybrid Valve Replacement Parts

Aria Valve Spring  
CA200-S (2 pk)



Aria/ Aria Plus "O" Ring  
CA200-O (2 pk)



Aria Valve Vent Spool Assembly  
CA200-AVPS



Aria Valve Threaded Housing (Metric)  
CA200-THM



Aria Valve Diaphragm  
CA-diaphragm (2 pk)



Aria Safety Barb Internal Check Valve  
CA300-SBIV (2 pk)



Aria® Valve Tool

Part Nr.: CA300-AVT

Straight Stainless Barb  
CA300-BST (2 pk)



# Elevated Vacuum Valves • *Socket Mounted*

## **Aria®** Safety Barb



Part Nr.: CA300-ASB (US)

Part Nr.: CA300-ASBM (Metric)

With Swivel Barb and  
internal check valve

Threaded Housing included

## **Aria®** Safety Barb Replacement Parts

Aria Safety Barb Threaded Housing (US)  
CA300-SBTH



Aria Safety Barb Threaded Housing (Metric)  
CA300-SBTHM



Aria Safety Barb Internal Check Valve  
CA300-SBIV (2 pk)



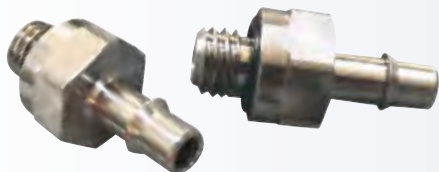
Aria Safety Barb "O" Ring  
CA300-O (2 pk)



90 Degree Stainless Barb  
CA300-B90 (2 pk)



## Straight Stainless Barbs



Part Nr.: CA300-BST (sold in pairs)

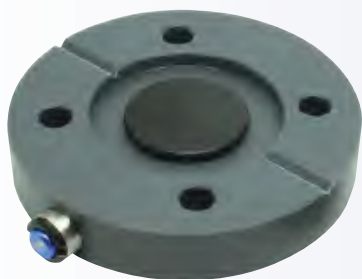
## Stainless 90° Swivel Barbs



Part Nr.: CA300-B90 (sold in pairs)

# Passive Expulsion Valves • *In Line* (Distal to Socket)

## Aria® Plate Valve



Part Nr: CA300-APV

Auto-Expulsion with Push Button Release



**Aria® Valve Tool**

Part Nr: CA300-AVT

## Aria® Plate Valve Replacement Parts

Aria Valve Spring  
CA200-S (2 pk)



Aria Valve Vent Spool  
CA200-AVS



Aria Valve Diaphragm  
CA-diaphragm (2 pk)



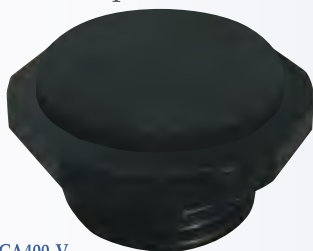
Aria Plate Valve Sealing Gasket  
(for use with CA300-APV)  
CA300-G2 (2 pk)



Aria Plate Valve Release Button  
CA300-RB



## Aria® Auto Expulsion Valve Insert



Part Nr: CA400-V



**Aria® Valve Tool**

Part Nr: CA300-AVT



**Aria® Mini Valve Insert &  
4-Hole Plate Insert Key**

Part Nr: CA100-MVK

## Aria® Auto Expulsion Valve Insert Replacement Parts

Aria Valve Spring  
CA200-S (2 pk)



Aria Valve Vent Spool  
CA200-AVS



Aria Valve Diaphragm  
CA-diaphragm (2 pk)



# Passive Expulsion Valves • *Socket Mounted*

## Aria® AK Valve



Part Nr.: CA100-AK

Auto Expulsion AK Valve for all socket materials, includes molding dummy and insert key

## Aria® AK Valve Insert Key



Part Nr.: CA100-K

## Aria® AK Valve Replacement Parts

Aria Valve Spring  
CA200-S (2 pk)



Aria AK Housing "O" Ring  
CA100-O (2 pk)



Aria Valve Diaphragm  
CA-diaphragm (2 pk)



Aria AK Valve Molding Dummy  
CA100-MD



Aria AK Valve Insert  
CA100-VI



## Aria® Mini Valve



Part Nr.: CA100-MV

Small, Low Profile Auto Expulsion Suction Valve for Upper/Lower Limb Applications, includes molding dummy and insert key

## Aria® Mini Valve Insert & 4-Hole Plate Insert Key



Part Nr.: CA100-MVK

## Aria® Mini Valve Replacement Parts

Aria Valve Spring  
CA200-S (2 pk)



Aria Valve Vent Spool Assembly  
CA200-AVPS



Aria Valve Diaphragm  
CA-diaphragm (2pk)



Aria Mini Valve Housing "O" Ring  
CA100-MVO (2pk)



Aria Mini Valve Molding Dummy  
CA100-MVD



## Aria® E-Valve



Part Nr.: CA200-AE

One way auto-expulsion valve for use in lower limb prosthetic fittings.

Must be used with a sealing sleeve to ensure appropriate vacuum is created in the prosthetic socket.

# Passive Expulsion Valves • *Socket Mounted*

## Aria® Valve Plus




Part Nr.: CA200-AVP  
Auto-Expulsion with Push Button Release  
Threaded Housing included




**Aria® Valve Tool**  
Part Nr: CA300-AVT


## Aria® Valve Plus Replacement Parts

Aria Valve Spring  
CA200-S (2 pk) 

Aria / Aria Plus "O" Ring  
CA200-O (2 pk) 

Aria Valve Vent Spool Assembly  
CA200-AVPS 

Aria Valve Threaded Housing (US)  
CA200-TH 

Aria Valve Diaphragm  
CA-diaphragm (2 pk) 

## Aria® Valve Plus Metric




Part Nr.: CA200-AVPM  
Auto-Expulsion with Push Button Release  
Threaded Housing included



**Aria® Valve Tool**  
Part Nr: CA300-AVT


## Aria® Valve Plus Metric Replacement Parts

Aria Valve Spring  
CA200-S (2 pk) 

Aria / Aria Plus "O" Ring  
CA200-O (2 pk) 

Aria Valve Vent Spool Assembly  
CA200-AVPS 

Aria Valve Threaded Housing (Metric)  
CA200-THM 

Aria Valve Diaphragm  
CA-diaphragm (2 pk) 



# Passive Expulsion Valves • *Socket Mounted*

## Aria® Valve




Part Nr.: CA200-AV  
Auto-Expulsion (no button)  
Threaded Housing included



Aria® Valve Tool  
Part Nr.: CA300-AVT


## Aria® Valve Replacement Parts

Aria Valve Spring  
CA200-S (2 pk) 

Aria / Aria Plus "O" Ring  
CA200-O (2 pk) 

Aria Valve Vent Spool  
CA200-AVS 

Aria Valve Threaded Housing (US)  
CA200-TH 

Aria Valve Diaphragm  
CA-diaphragm (2 pk) 

## Aria® Valve Metric




Part Nr.: CA200-AVM  
Auto-Expulsion (no button)  
Threaded Housing included



Aria® Valve Tool  
Part Nr.: CA300-AVT


## Aria® Valve Metric Replacement Parts

Aria Valve Spring  
CA200-S (2 pk) 

Aria / Aria Plus "O" Ring  
CA200-O (2 pk) 

Aria Valve Vent Spool  
CA200-AVS 

Aria Valve Threaded Housing (Metric)  
CA200-THM 

Aria Valve Diaphragm  
CA-diaphragm (2 pk) 

# Cypress Adaptive Valve Kits

## **Aria**® HV Plate Valve Kit

Part Nr.: **CA400-TIP-HVP**

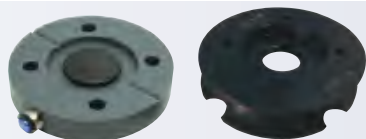
(includes Part Nr. **CA400-TIP** and Part Nr. **CA300-AHVP**)



## **Aria**® Plate Valve Kit

Part Nr.: **CA400-TIP-P**

(includes Part Nr. **CA400-TIP** and Part Nr. **CA300-APV**)



## **Aria**® HV Valve Insert Kit

Part Nr.: **CA400-TIP-V**

(includes Part Nr. **CA400-TIP** and Part Nr. **CA400-HV**)



## **Aria**® Auto Expulsion Valve Insert Kit

Part Nr.: **CA400-TIP-V**

(includes Part Nr. **CA400-TIP** and Part Nr. **CA400-V**)



## **Aria**® 90° HV Valve Insert Kit

Part Nr.: **CA400-TIP-HV9**

(includes Part Nr. **CA400-TIP** and Part Nr. **CA400-HV9**)



## **Aria**® Dummy Plug Insert Kit

Part Nr.: **CA400-TIP-PG**

(includes Part Nr. **CA400-TIP** and Part Nr. **CA400-P**)



## **Aria**® Expulsion Valve/Plug Kit

Part Nr.: **CA400-TIP-VK**

(includes Part Nr. **CA400-TIP**, Part Nr. **CA400-V**,  
Part Nr. **CA400-P**, and Part Nr. **CA100-MVK**)



# A Great Fitting Socket That Fits *Your* Lifestyle!

## SYMPHONIE AQUA COMPACT

Full Weight Bearing Casting System • Affordable and Portable!

*Available exclusively  
from Cypress Adaptive*

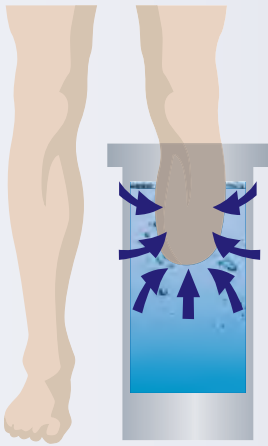


## A Perfect Fit for You and Your Patients



## Consistently Capture True Anatomy under Weight Bearing Conditions

This innovative technology of the hydrostatic cylinder replicates the exact forces one would experience while standing in a prosthetic socket. The accuracy of the weight bearing impression eliminates the need for cast modifications and enables the practitioner to efficiently provide the patient with a comfortable, well fitting socket.



## Symphonie Aqua System Transtibial with Vector Control



Part Nr.: CA800-SVCU  
(includes 1 ea. CA800-SAS and 1 ea. CA800-VCU)

## Symphonie Aqua Compact



Part Nr.: CA800-COM

## Symphonie Aqua System Transfemoral



Part Nr.: CA800-TVCU  
(includes 1 ea. CA800-TF and 1 ea. CA800-VCU)

## Symphonie Aqua System Digital



Part Nr.: CA800-DG

# Symphonie Aqua System

## Symphonie Aqua Passive



Part Nr.: CA800-SAS

## Symphonie Aqua System Accessories



### Distal Cup Silicone Pads

Part No. CA800-SP  
(for knee disarticulation)

Part No. CA800-SPU  
(for use when casting  
over urethane liners)



### Aqua Pad

Part No. CA800-SAP



### Casting Lube (34 oz. Jar)

Part No. CA800-RL

### Reservoir Bag

Part No. CA800-RB



### Symphonie Replacement Membrane

Part No. CA800-M  
(Transtibial & Compact)

Part No. CA800-MTF  
(Transfemoral)



### Symphonie Casting Lifter

Part No. CA800-CS  
(non-tilt)

Part No. CA800-CSR  
(with tilt)

*Adjustable lifter positions the  
Symphonie Aqua Cylinder  
at optimal patient height.*

*Used with both Transfemoral  
and Transfibular Cylinders.*

## Symphonie Sleeve



The Symphonie Sleeve by Romedis is unlike any suspension sleeve on the market. Its unique design offers a lightweight construction that is both durable and extremely flexible, giving the wearer maximum comfort, function and range of motion. The Symphonie Knee Sleeve is available in four sizes. To determine size, take circumference measurement of prosthetic socket at level of MPT.

<i>Part Number</i>	<i>Size</i>	<i>Circumference at prosthetic socket MPT</i>
SA8011	S	23 cm - 33 cm
SA8012	M	27 cm - 37 cm
SA8013	L	31 cm - 41 cm
SA8014	XL	35 cm - 45 cm





# Suspension Sleeves

## Neo-Flex™



### Preflex Neoprene

The Neo-Flex is a neoprene suspension sleeve that will hold a seal for passive suction in addition to providing a secure mechanical suspension of the prosthesis. May be trimmed at proximal and distal ends to customize length if needed.

<i>Limb Measurement</i>	<i>Sleeve Size</i>	<i>Ref no. Golden Tan</i>	<i>Ref no. Charcoal Gray</i>
10.5"-12.5"	0	CA700-FP-T0	CA700-FP-G0
11.5"-13"	1	CA700-FP-T1	CA700-FP-G1
12.5"-14"	1.5	CA700-FP-T15	CA700-FP-G15
14"-16"	2	CA700-FP-T2	CA700-FP-G2
15"-17"	2.5	CA700-FP-T25	CA700-FP-G25
16"-18"	3	CA700-FP-T3	CA700-FP-G3
18.5"-20	4	CA700-FP-T4	CA700-FP-G4
21"-23"	5	CA700-FP-T5	CA700-FP-G5

## Neo-FlexACTIVE™



### Preflex Neoprene

The Neo-Flex Active is constructed of a strong, latex-free neoprene with built-in knee pad for added cushioning and wear. Its flexed shape and Nylon knee center add softness and flexibility to enhance comfort and mobility. May be trimmed at proximal and distal ends to customize length if needed.

<i>Limb Measurement</i>	<i>Sleeve Size</i>	<i>Ref no. Two Tone Gray/Black</i>
10.5"-12.5"	0	CA700-FPA-0
11.5"-13"	1	CA700-FPA-1
12.5"-14"	1.5	CA700-FPA-15
14"-16"	2	CA700-FPA-2
15"-17"	2.5	CA700-FPA-25
16"-18"	3	CA700-FPA-3
18.5"-20	4	CA700-FPA-4
21"-23"	5	CA700-FPA-5

## Neo-FlexJR™



### Preflex Neoprene Pediatric

The Neo-Flex Jr. is a durable, cost-effective pediatric prosthetic suspension sleeve. It is constructed of latex-free neoprene with built-in knee pad for added cushioning and durability. Its flexed design enhances comfort, mobility and provides a secure suspension of the prosthesis for the active youngster. May be trimmed at proximal and distal ends to customize length if needed.

<i>Limb Measurement</i>	<i>Sleeve Size</i>	<i>Ref no. Black w/Rainbow Stitch</i>	<i>Ref no. Gray w/Rainbow Stitch</i>
6"-6.5"	XS	CA700-FPJ-BXS	CA700-FPJ-GXS
6.5"-7.5"	S	CA700-FPJ-BS	CA700-FPJ-GS
7.5"-8.5"	M	CA700-FPJ-BM	CA700-FPJ-GM
8.5"-9.5"	L	CA700-FPJ-BL	CA700-FPJ-GL
9.5"-10.5"	XL	CA700-FPJ-BXL	CA700-FPJ-GXL
10.5"-11.5"	2XL	CA700-FPJ-B2XL	CA700-FPJ-G2XL

# Optimal Ankle Options!

The Vista Family of Ankles offers the practitioner value while still providing diverse options to best accommodate their patients.



## **Vista Ankle**

Part Nr: CA500-BMP  
HCPC: L5974 & L5781

Universal Single-Axis  
Prosthetic Ankle for  
Elevated Vacuum  
Suspension



## **Vista Resilience HV**

Part Nr: CA500-HYD  
HCPC: L5968 & L5781

Hydraulic Ankle for  
Elevated Vacuum  
Suspension



## **Vista Resilience**

Part Nr: CA500-RES  
HCPC: L5968

Smooth Functioning  
Hydraulic Ankle  
for K2 & K3  
Ambulators

# Mechanical Ankles for Elevated Vacuum

**Vista Ankle™**



## Universal Single-Axis Prosthetic Ankle for Elevated Vacuum Suspension

The vacuum comes from the ankle movements during gait, i.e. cyclically from plantarflexion (PF) to dorsiflexion (DF). The barb is located inside the proximal tube clamp and thus the hose can be hidden in the pylon, which eliminates system failure caused by unprotected hose-barb connection. The distal female pyramid adapter is compatible with a wide range of prosthetic feet.

Part Nr: **CA500-BMP**

Suggested L Codes: L5974 and L5781

**Vista Resilience HV™**



## Hydraulic Ankle for Elevated Vacuum Suspension

The vacuum comes from the cyclic ankle movements during gait. The hydraulic damping or plantarflexion (PF) and dorsiflexion (DF) can be infinitely and independently tuned to achieve the perfect balance between stability and mobility, even while ascending or descending slopes and walking on varied terrain. During swing phase, the innovative hydraulic unit will drive the ankle into DF, as in natural active ankle DF, to facilitate toe clearance.

Part Nr: **CA500-HYD**

Suggested L Codes: L5968 and L5781

# Hydraulic Mechanical Ankle

**Vista Resilience™**



## Hydraulic Ankle dedicated to natural rollover

The New Vista Resilience from Cypress Adaptive is an autonomous mechanical hydraulic ankle designed to perform well with any K2 or lower profile K3 foot. The ankle offers a natural mechanical range of motion of 19 deg. that is further increased when combined with your foot of choice.

Part Nr: **CA500-RES**

Suggested L Codes: L5968

## Paseo ML



### Monocentric Brake Knee Joint with Stance Flexion and Manual Lock

The Paseo ML has a durable and adjustable weight activated brake. Its compact and lightweight, while allowing 5° stance flexion for shock absorption. Includes a manual lock for early learning phase, which can be disengaged permanently as needed. Also includes a built-in adjustable extension assist.

Part Nr: **CA602-ML**

Suggested L Codes: L5812, L5845, L5850 and L5925

## Actua Knee™ Pneumatic



### Polycentric Pneumatic Knee with Stance Flexion and Extension Assist

The Actua Knee is a polycentric pneumatic knee joint with stance flexion feature and non-adjustable spring extension assist. The stance flexion can be tuned infinitely, which ensures optimal comfort during loading response. The particularly long steering knuckles ensure high stability as well as a high flexion angle of the knee-joint.

Part Nr: **CA603-PPN**

Suggested L Codes: L5840, L5845 and L5850

## Actua Knee™ Hydraulic



### Polycentric Hydraulic Knee with Stance Flexion and Extension Assist

The Actua Knee Hydraulic is a polycentric hydraulic knee joint with stance flexion feature and interchangeable spring extension assist. The stance flexion can be tuned infinitely, which ensures optimal comfort during loading response. The patented horizontal hydraulic cylinder contributes to the compact size of this hydraulic knee joint. In addition, maintenance is easy with the innovative oil-refill system.

Part Nr: **CA603-PHY**

Suggested L Codes: L5814, L5848, L5845 and L5850

## Expulsion Valves

## Part No.

<b>Aria Valve Plus</b> (push button) - <i>US Thread (Threaded Housing Included)</i>	CA200-AVP
<b>Aria Valve Plus</b> (push button) - <i>Metric Thread (Threaded Housing Included)</i>	CA200-AVPM
<b>Aria Valve</b> - <i>US Thread (Threaded Housing Included)</i>	CA200-AV
<b>Aria Valve</b> - <i>Metric Thread (Threaded Housing Included)</i>	CA200-AVM
<b>Aria Mini Valve</b> - <i>(Threaded Housing Included)</i>	CA100-MV
<b>Aria HV Plate Valve</b> <i>(For Elevated Vac Systems)</i>	CA300-AHVP
<b>Aria Plate Valve</b> <i>(For Passive Suction)</i>	CA300-APV
<b>Aria Safety Barb</b> - <i>US Thread (Threaded Housing Included)</i>	CA300-ASB
<b>Aria Safety Barb</b> - <i>Metric Thread (Threaded Housing included)</i>	CA300-ASBM
<b>90 Degree Stainless Barb (2 pk)</b> <i>(Has Swivel Feature)</i>	CA300-B90
<b>Straight Stainless Barb (2 pk)</b>	CA300-BST
<b>Aria Hybrid Valve</b> <i>(Threaded Housing Included)</i>	CA300-HYV
<b>Aria AK Valve</b> <i>(Includes Molding Dummy and Insert Key)</i>	CA100-AK
<b>Aria E-Valve Kit</b>	CA200-AE

## 4-Hole Plate and Valve Inserts

## Part No.

<b>Cypress 4-Hole Tie-In Plate</b>	CA400-TIP
<b>Cypress Low Profile 4-Hole Plate</b>	CA400-LP
<b>Thread-In Solid Plug for Tie In Plate</b>	CA400-P
<b>Thread-In Auto Valve for Tie In Plate</b>	CA400-V
<b>Thread-In High Vac Insert (90°) for Tie In Plate</b>	CA400-HV9
<b>Thread-In High Vac Insert (straight) for Tie In Plate</b>	CA400-HV

## 4-Hole Plate Kits

	Part No.
Kit: 4-Hole Tie In Plate + Solid Plug Insert	CA400-TIP-PG
Kit: 4-Hole Tie In Plate + Auto Valve Insert	CA400-TIP-V
Kit: 4-Hole Tie In Plate + HV Insert (90°)	CA400-TIP-HV9
Kit: 4-Hole Tie In Plate + HV Insert (straight)	CA400-TIP-HV
Kit: 4-Hole Tie In Plate + Aria Plate Valve	CA400-TIP-P
Kit: 4-Hole Tie In Plate + Aria HV Plate Valve	CA400-TIP-HVP
Kit: 4-Hole Tie In Plate + Aria Expulsion Valve/Plug Kit	CA400-TIP-VK

## Symphonie Aqua System

	Part No.
Symphonie Aqua System Transtibial with Vector Control	CA800-SVCU
Symphonie Aqua Passive	CA800-SAS
Symphonie Aqua System Transfemoral	CA800-TVCU
Symphonie Aqua System Digital	CA800-DG
Symphonie Aqua System Compact	CA800-COM
Symphonie Aqua Vector Control Unit	CA800-VCU
Symphonie Aqua System Transfemoral Cylinder	CA800-TF
Symphonie Casting Lifter (non-tilt)	CA800-CS
Symphonie Casting Lifter (with tilt)	CA800-CSR

## Symphonie Aqua System Accessories

	Part No.
Distal Cup Silicone Pads - <i>for knee disarticulation</i>	CA800-SP
Distal Cup Silicone Pads - <i>for use when casting over urethane liners</i>	CA800-SPU

## Symphonie Aqua System Accessories (continued) Part No.

<b>Symphonie Replacement Membrane</b> - <i>Transtibial and Compact</i>	CA800-M
<b>Symphonie Replacement Membrane</b> - <i>Transfemoral</i>	CA800-MTF
<b>Casting Lube</b>	CA800-RL
<b>Aqua Pad</b>	CA800-SAP
<b>Reservoir Bag</b>	CA800-RB

## Flexed Suspension Sleeves Part No.

<b>Neo-Flex</b>	CA700-FP <i>Series, each</i>
<b>Neo-Flex Jr.</b>	CA700-FPJ <i>Series, each</i>
<b>Neo-FlexActive</b>	CA700-FPA <i>Series, each</i>
<b>Symphonie Sleeve</b>	SA801 <i>Series, each</i>

## Elevated Vacuum Ankles Part No.

<b>Vista Ankle</b>	CA500-BMP
<b>Vista Resilience HV</b>	CA500-HYD

## Hydraulic Ankles Part No.

<b>Vista Resilience</b>	CA500-RES
-------------------------	-----------

## Prosthetic Knees Part No.

<b>Actua Knee</b>	CA603-PPN
<b>Actua Knee HY</b>	CA603-PHY
<b>Paseo ML Knee</b>	CA602-ML



## Tools

Aria Valve Tool	CA300-AVT
Aria Mini Valve Insert & 4-Hole Plate Insert Key	CA100-MVK
Aria AK Insert Key	CA100-K

## Replacement Parts

	Part No.
CA-diaphragm (2 pk)	CA-diaphragm
Aria AK Housing "O" Ring (2 pk)	CA100-O
Aria AK Molding Dummy	CA100-MD
Aria Mini Valve Molding Dummy	CA100-MVD
Aria AK Valve Insert	CA100-VI
Aria Valve Spring (2 pk)	CA200-S
Aria Valve "O" Ring (2 pk)	CA200-O
Aria Mini Valve Housing "O" Ring (2 pk)	CA100-MVO
Aria Valve Vent Spool Assembly	CA200-AVPS
Aria Valve Vent Spool	CA200-AVS
Aria Valve Threaded Housing US	CA200-TH
Aria Valve Threaded Housing Metric	CA200-THM
Aria Safety Barb Internal Valve (2 pk)	CA300-SBIV
Aria Plate Valve Release Button	CA300-RB
Aria HV Plate Valve Sealing Gasket (2 pk) <i>(for use with CA300-AHVP)</i>	CA300-G
Aria Plate Valve Sealing Gasket (2 pk) <i>(for use with CA300-APV)</i>	CA300-G2
Aria Safety Barb Threaded Housing US	CA300-SBTH
Aria Safety Barb Threaded Housing Metric	CA300-SBTHM
Aria Safety Barb "O" Ring (2 pk)	CA300-O

# Warranty Information

*All warranties effective from date of purchase*

Valves .....	6 months
Knee Sleeves .....	3 months
Vista Ankles .....	2 years
Prosthetic Knees .....	2 years
Symphonie Aqua Systems .....	2 years
Symphonie Aqua Membranes* .....	9 months
<small>*conditional-warranty only valid if used with Romedis Casting Lube. Use of other creams will void the membrane warranty</small>	
Symphonie Aqua Reservoir Bag .....	1 year
Symphonie Aqua distal cup silicone pads .....	1 year
Symphonie Aqua Pad .....	1 year

**Catherine Cassel**  
**GENERAL MANAGER**

Cell: 083 274 7820  
Office: 012 - 991 2227  
Email: [catherine@medroma.co.za](mailto:catherine@medroma.co.za)  
Orders: [orders@medroma.co.za](mailto:orders@medroma.co.za)

**MEDROMA**

[www.medroma.co.za](http://www.medroma.co.za)

---

ORTHOTICS

---

PROSTHETICS

---

COMPRESSION GARMENTS

**Marike du Preez**  
**HEAD OF PROSTHETICS**

Cell: 083 381 0454  
Office: 012 - 991 2227  
Email: [marike@medroma.co.za](mailto:marike@medroma.co.za)  
Orders: [orders@medroma.co.za](mailto:orders@medroma.co.za)

**MEDROMA**

[www.medroma.co.za](http://www.medroma.co.za)

---

ORTHOTICS

---

PROSTHETICS

---

COMPRESSION GARMENTS